

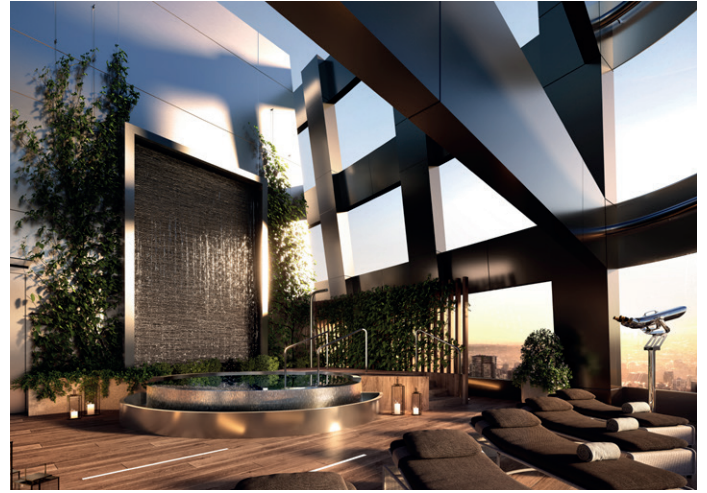
CURV



the shape of
a new era

Raising the Standard —

- Tallest residential tower in Vancouver
- 358 homes, 60-storeys high
- Architecture by Tom Wright, creator of Dubai's Burj Al Arab, one of the most iconic pieces of modern architecture in the world
- Architectural interiors by Andres Escobar, designer of upscale New York properties such as One Times Square and the Summit apartments
- Tallest Passive House in the world—the leading, global standard for low-carbon, healthful, energy-efficient homes—resulting in a 90% savings of heating and cooling energy use compared to similar buildings
- Soul-stirring views of English Bay, Coal Harbour and the North Shore mountains
- Never before seen 60th floor and rooftop amenity spaces
- Developed by Brivia Group, a Canadian company founded in 2000 in Montreal with over 10 million sqft of buildable area, in partnership with Henson Group



Interiors —

Availability

- 168 one bedroom homes, ranging from 529–617 sqft
- 154 two bedroom homes, ranging from 719–939 sqft
- 36 three bedroom homes, ranging from 1154–1469 sqft

Specifications

- State-of-the-art ventilation system with quiet circulation of clean, filtered, temperature-adjusted air
- Quietest homes available
- Exceptional insulation and optimal indoor temperatures
- Expansive triple-glazed, draft-free windows
- Stylish engineered wood floors
- European, contemporary soft-close kitchen cabinets
- Sleek stone countertops and backsplash (natural or engineered, depending on scheme selected)

- Contemporary European kitchen appliances with integrated panels
- Custom-designed bedroom closets
- Induction cooktop
- Wine fridge (in select homes)
- Motorized blinds
- Comprehensive home automation system including smartphone application and in-suite touch panel

Upgrade Package

- Multiroom sound system
- Wireless motion detector
- TV with soundbar/sub

Amenities —

60th Floor Amenities

- State-of-the-art gym
- Yoga room, equipped by Lululemon Studio
- Sauna
- Guest suite
- Private lounge, dining room and wine cellar
- Entertainment lounge and kitchen
- Games lounge
- Multi-sport simulator room

Rooftop Amenities

- Rooftop overlooking Stanley Park, North Shore Mountains, English Bay and more, with breathtaking 360-degree unobstructed views
- Sky dining area, complete with BBQ and pizza oven
- SkyBar
- Social space and garden with outdoor cinema
- Soothing SkySpa hot tub pool

Lobby

- On-site 24-hour concierge service
- Prestigious and exclusive building entrance, designed by Andres Escobar

Other

- Car share service available
- Bike stalls ready for electric charging
- Bike elevator
- Parking spots ready for electric vehicle charging stations
- Pet wash station



Presentation Gallery —

Suite 105 – 510 Burrard Street
Vancouver, BC V6C 3A8

Contact —

info@thecurv.ca
604 960 2878

